

Our standard tube size

ϕD	s
63,5	1,75
88,9	2,90
108,0	3,25
133,0	3,60
159,0	4,50

Dimensions

Qty	ϕD	ϕd	RL	EL	AL	Type	n	b	f	a	$\phi d1$	LS	m x t

With rings Yes No

Type of rings / Qty

Type of arrangement



A

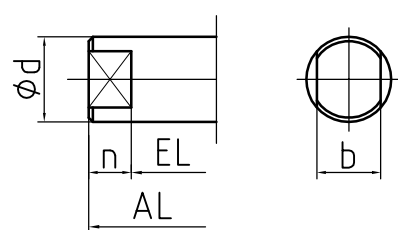


B

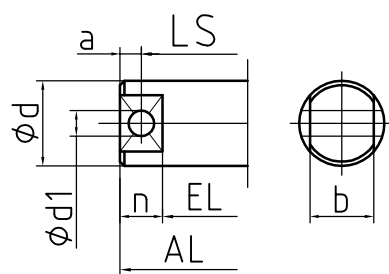


Buffer

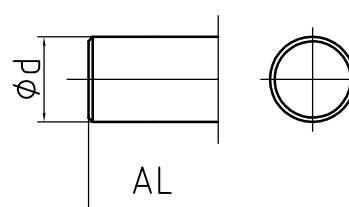
Type SW - open flats



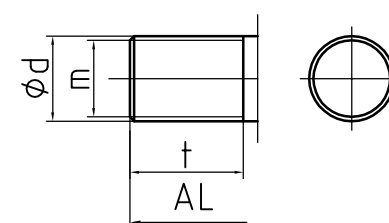
Type QU - bore/open flats



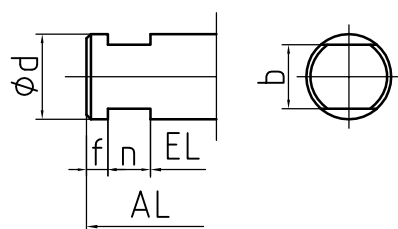
Type OB - without work



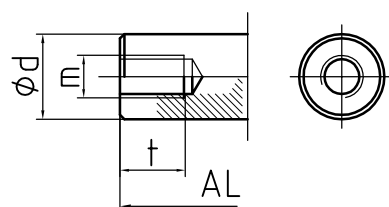
Type AG - external thread



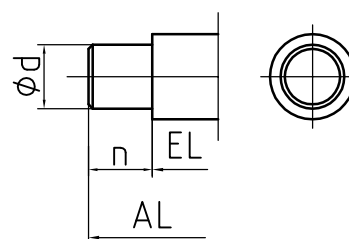
Type GSW - closed flats



Type IG - internal thread



Type ZP - machined stub



Type Sketch your own

Additional details: